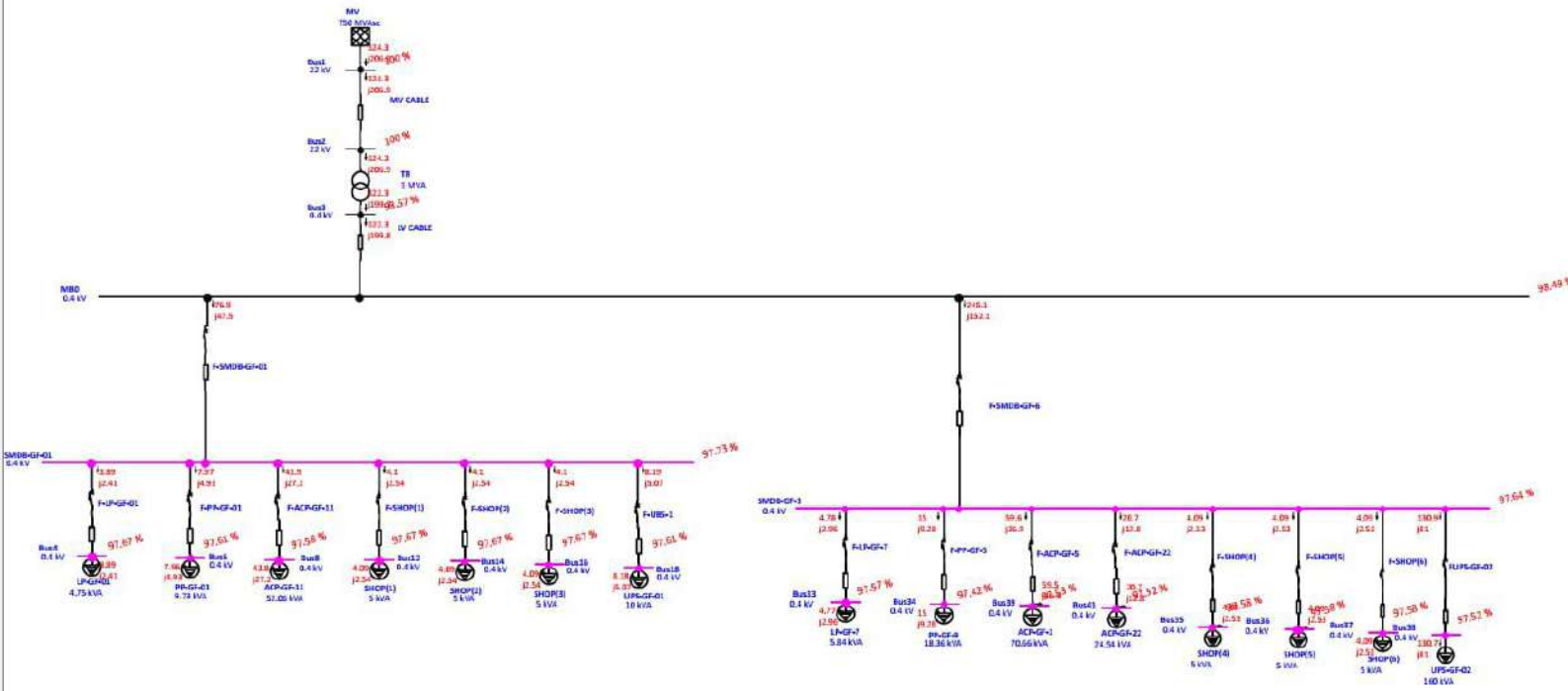
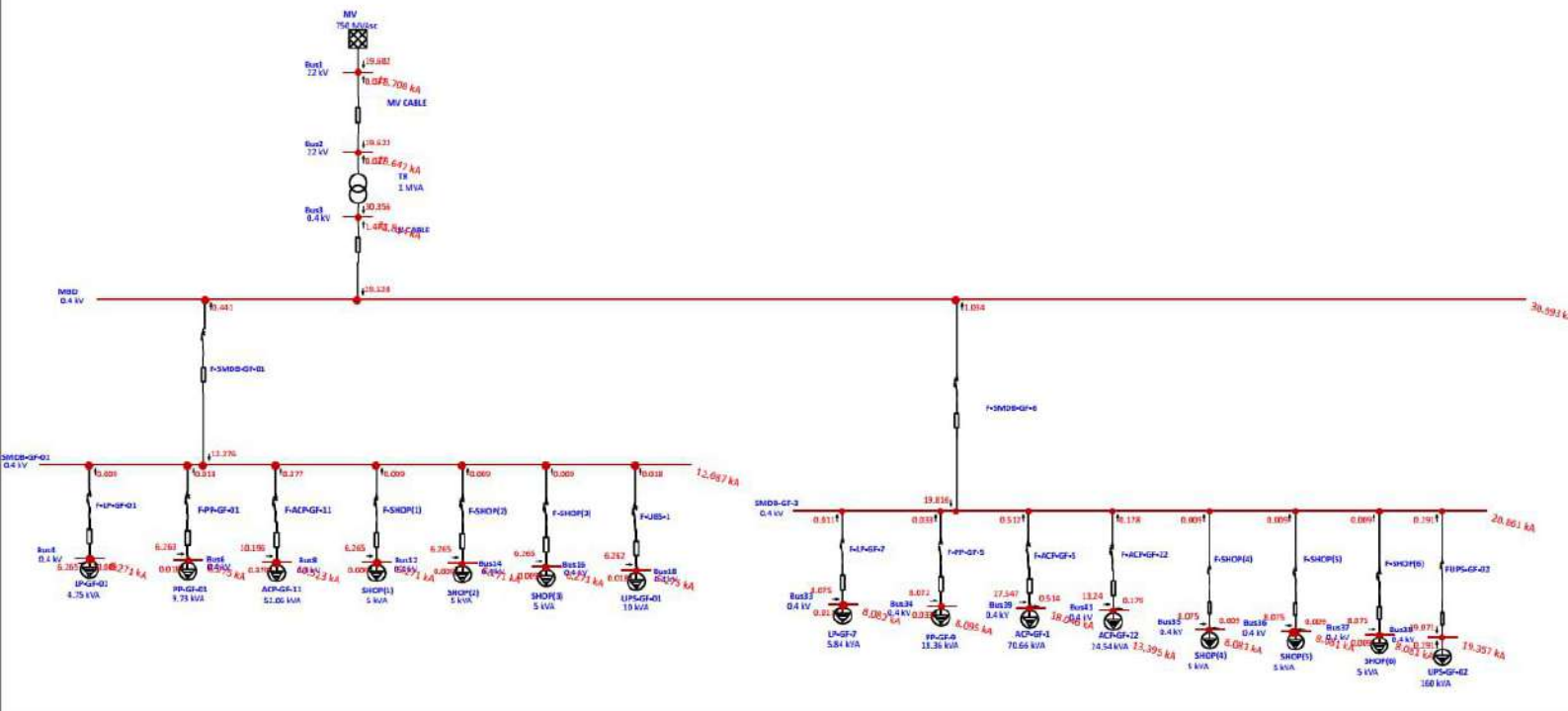


One-Line Diagram - OLV1 (Load Flow Analysis)



One-Line Diagram - OLV1 (Short-Circuit Analysis)



File Home Insert Draw Page Layout Formulas Data Review View Help Foxit PDF Tell me what you want to do

Cut Copy Paste Format Painter Clipboard Font Alignment Number Styles Cells Editing

F8

PANEL NAME : LP-G		MOUNTED : SURFACE		380 / 230, 3 PHASE, 4W&G :		AMP. TRIP / AMP. FRAME																							
LOCATION : GROUND FLOOR		ROOM NO. : ELEC. ROOM		MAIN CIRCUIT BREAKER RATING :		20 / 100																							
CT. NO.	DESCRIPTION	PHASE (A) (VA)	PHASE (B) (VA)	PHASE (C) (VA)	NO. OF PH	DEMAND FACTOR (DF1)	AMP. TRIP (AMP)	AMP. FRAME (AMP)	POWER FACTOR COS φ	INDIVIDUAL DEMAND LOAD (A+B+C)/DF1			BR A	BR B	BR C	DR	INDIVIDUAL DEMAND LOAD (A+B+C)/DF2			POWER FACTOR COS φ	AMP. FRAME (AMP)	AMP. TRIP (AMP)	DEMAND FACTOR (DF2)	NO. OF PH	PHASE (A) (VA)	PHASE (B) (VA)	PHASE (C) (VA)	DESCRIPTION	CT. NO.
										(VA)	(W)	(VAR)					(VA)	(W)	(VAR)										
1	Lighting	250			1	0.90	16		0.95	160	171	56	1	*	2	22	60	72	0.95	16	0.90	1	20				lighting	1	
3	Lighting		100		1	0.90	16		0.95	99	95	28	3	*	4	141	428	450	0.95	16	0.90	1		500			lighting	4	
4	Lighting			500	1	0.90	16		0.95	477	453	140	0	*	0	0	180	180	0.95	16	0.90	1			220		lighting	4	
7	Lighting	200			1	0.90	16		0.95	221	209	69	7	*	0	0	205	216	0.95	16	0.90	1	200				lighting	7	
9	Lighting		100		1	0.90	16		0.95	93	89	28	0	*	10	0	0	0	0.95	16	0.90	1					SPARE	10	
11	SPACE				1					0	0	0	11	*	12	0	0	0	0.95	16	0.90	1					SPARE	11	
13	SPACE				1					0	0	0	13	*	14	0	0	0	0.95	16	0.90	1					SPARE	13	
15	SPACE				1					0	0	0	15	*	16	0	0	0	0.95	16	0.90	1					SPARE	15	
SUB TOTAL VA		445	200	530						1057	1004	330				292	889	936						320	500	220	SUB TOTAL VA		

TOTAL LOAD	=	2.22	KVA	DEMAND CURRENT "I" =	3	AMPERE	Total Active Power =	2	KW	TAN φ =	0.33	TOTAL CONNECTED LOAD 'A' =	765	VA
DR "DF"	=	0.90		SHORT CIRCUIT LEVEL =	15	KA	Total Reactive Power =	1	KVAR	COS φ =	0.95	TOTAL CONNECTED LOAD 'B' =	700	VA
	=	1.99	KVA							SIN φ =	0.31	TOTAL CONNECTED LOAD 'C' =	750	VA

Home | Insert | Annotate | Parametric | View | Manage | Output | Add-ins | Collaborate | Express Tools | Featured Apps

Draw: Line, Polyline, Circle, Arc, Move, Rotate, Trim, Copy, Mirror, Fillet, Stretch, Scale, Array

Modify: Text, Dimension, Table

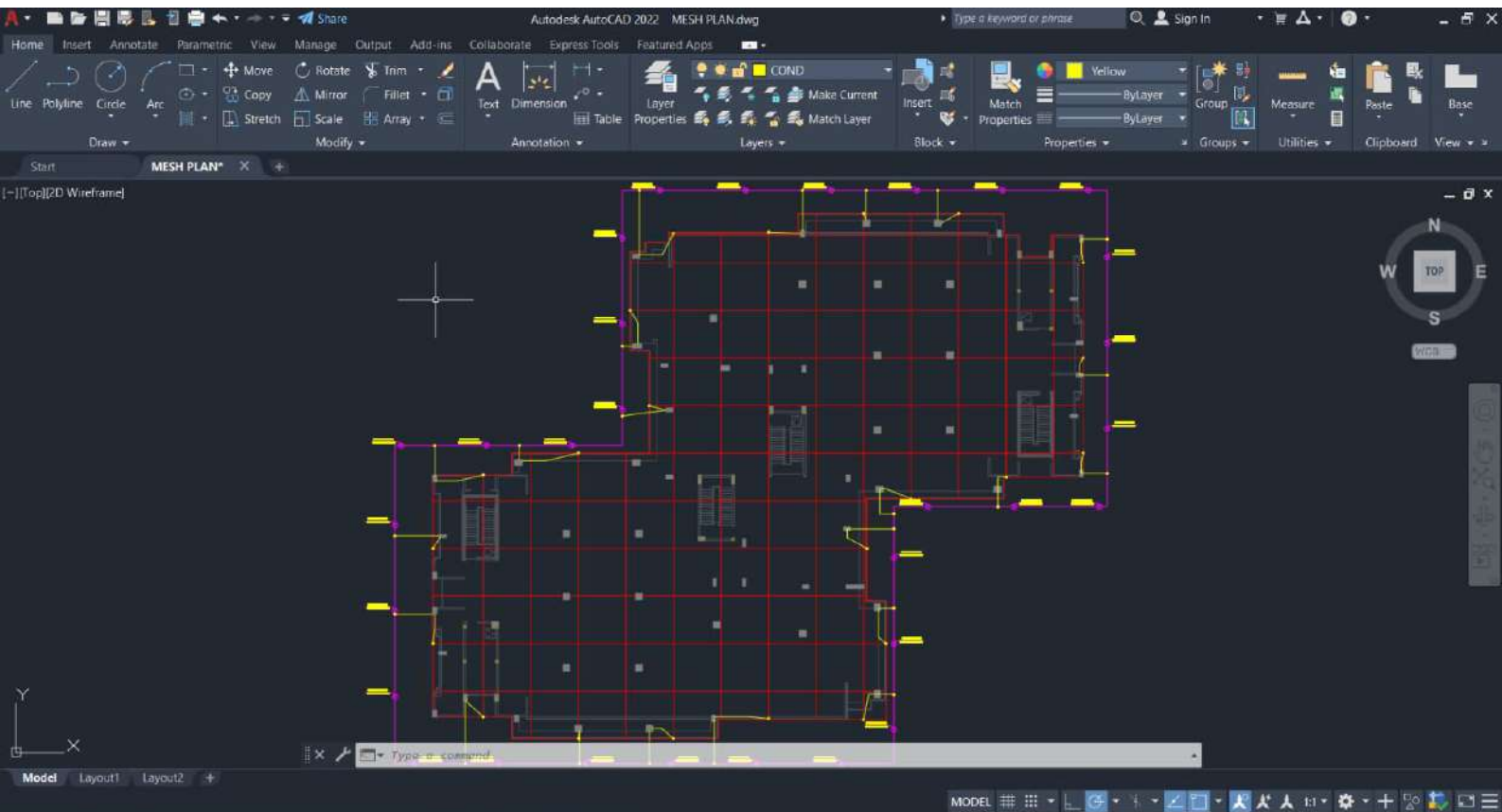
Layers: Layer Properties, Make Current, Match Layer

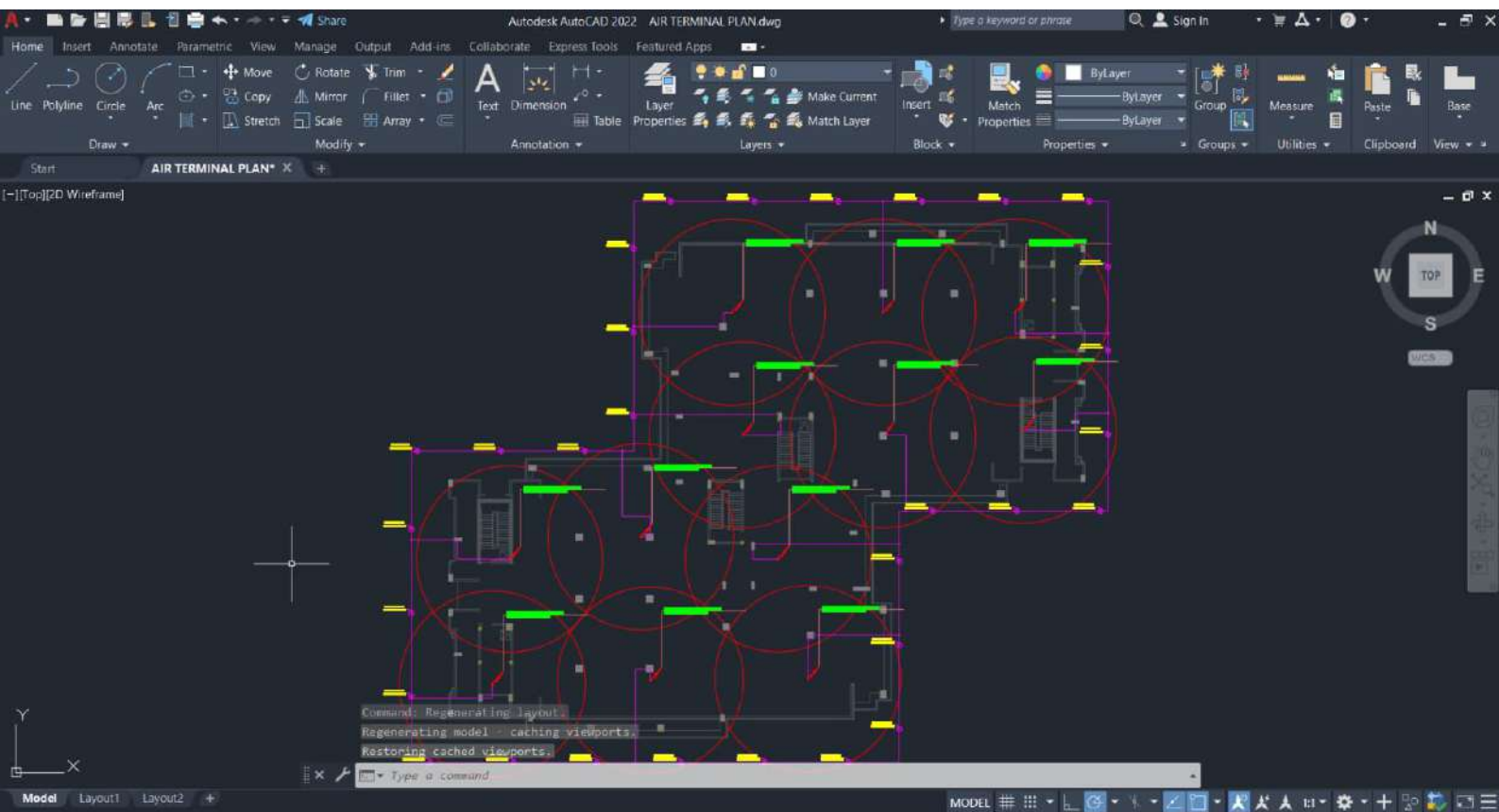
Block: Insert, Match Properties

Properties: ByLayer, ByLayer, ByLayer

Utilities: Group, Measure, Paste, Base







Home Insert Annotate Parametric View Manage Output Add-ins Collaborate Express Tools Featured Apps

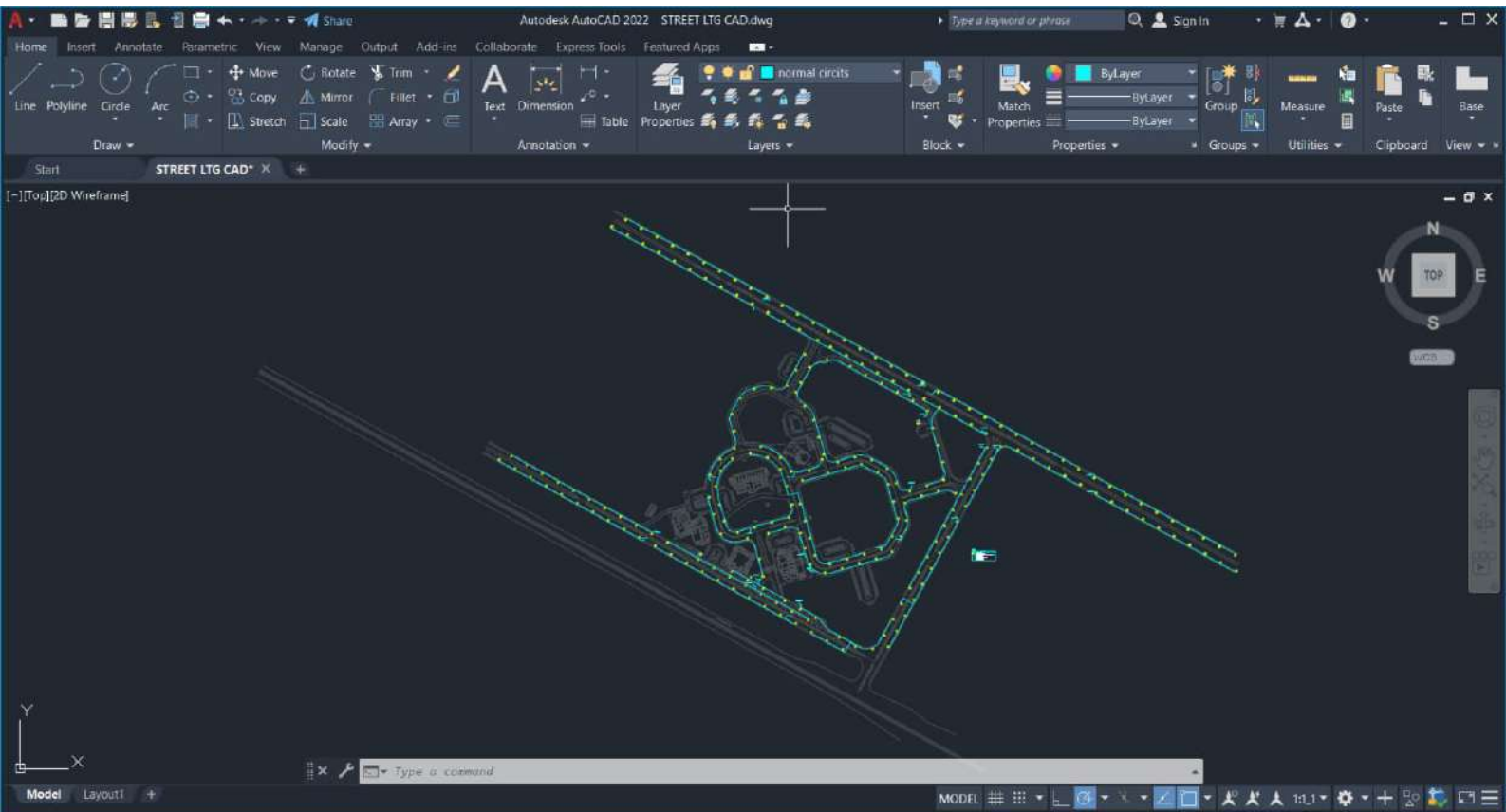
Line Polyline Circle Arc Move Rotate Trim Copy Mirror Fillet Stretch Scale Array Text Dimension Table Layer Properties Make Current Match Layer

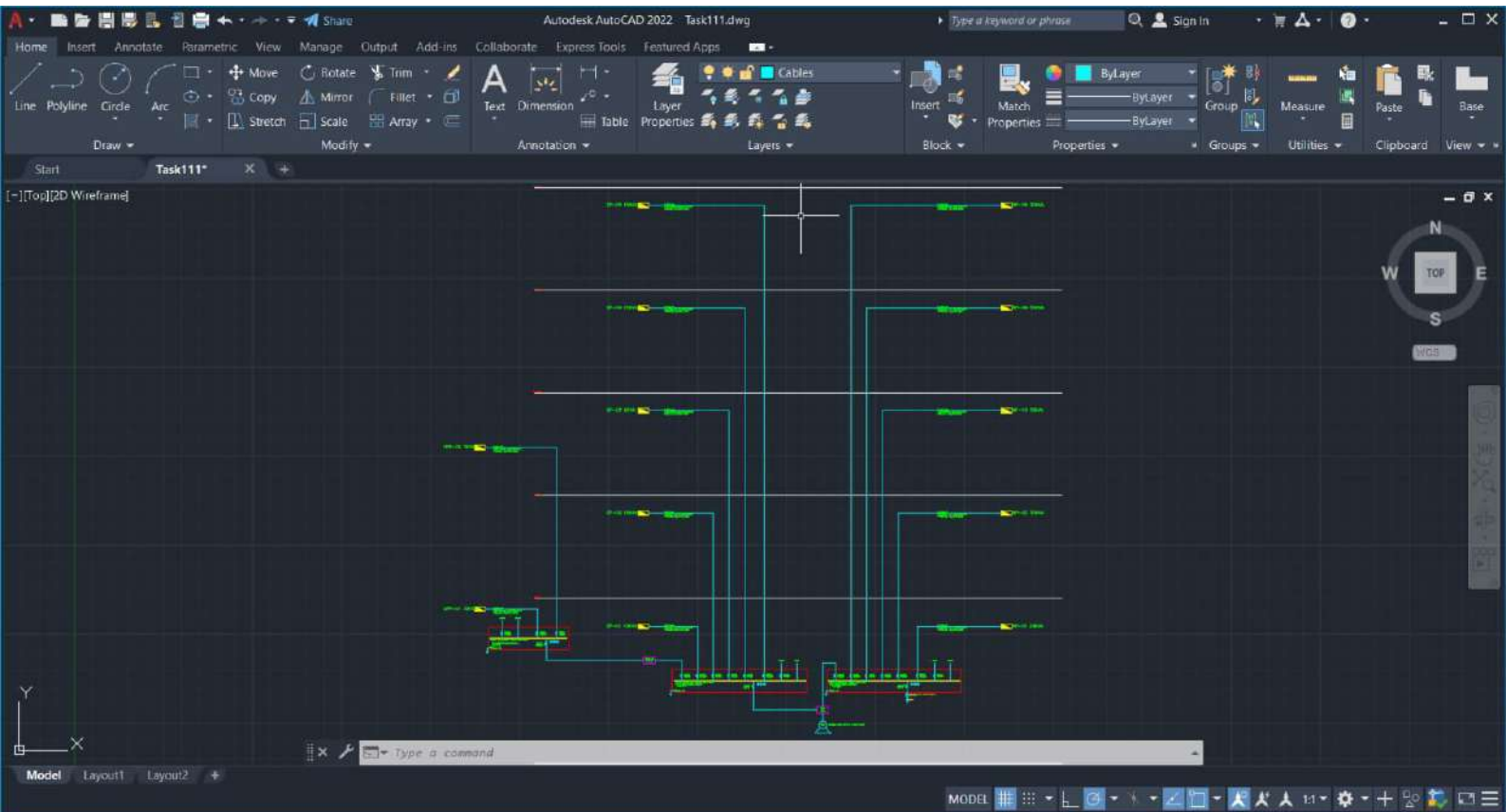
ByLayer ByLayer ByLayer

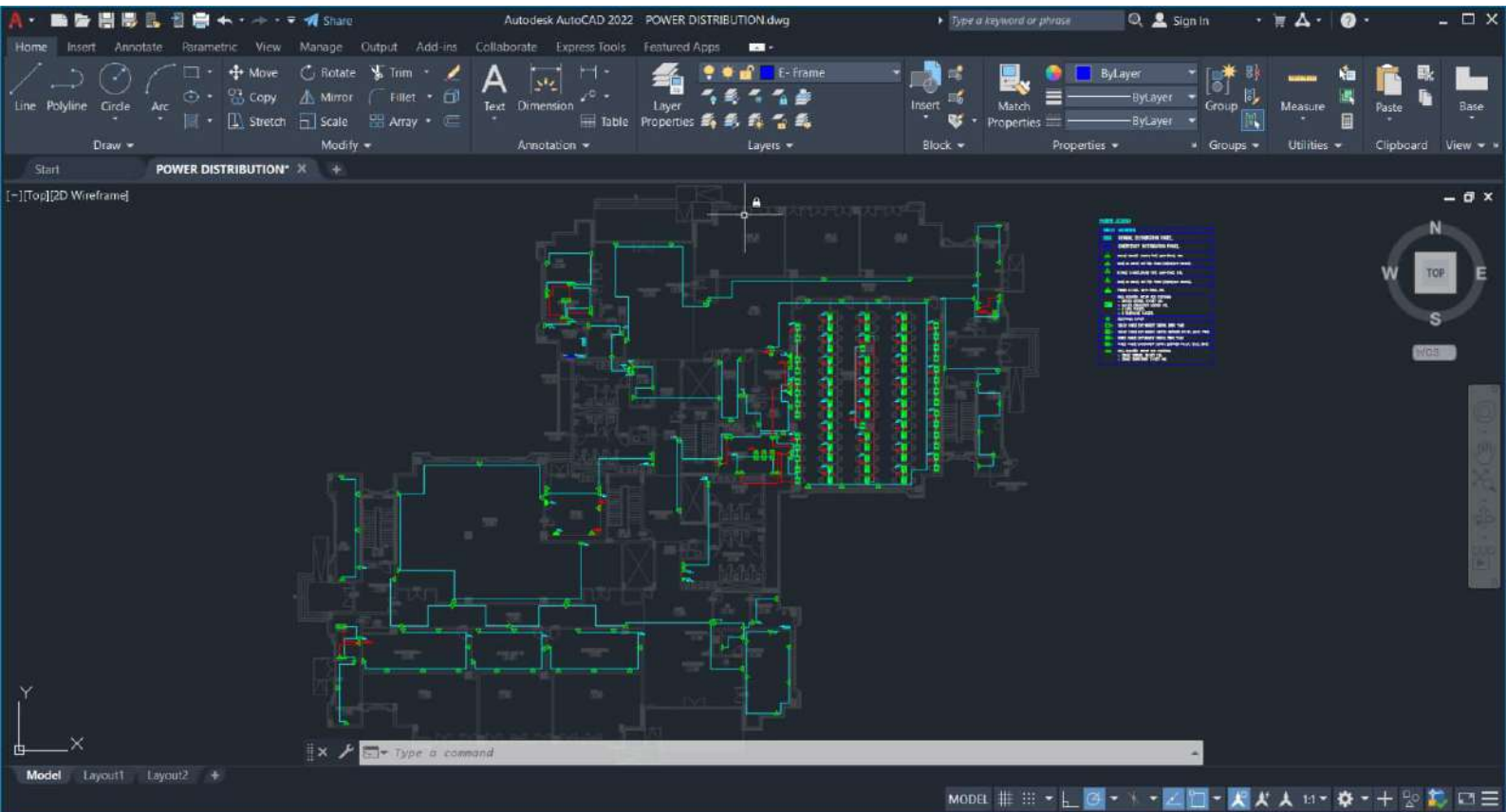
Group Measure Paste Base

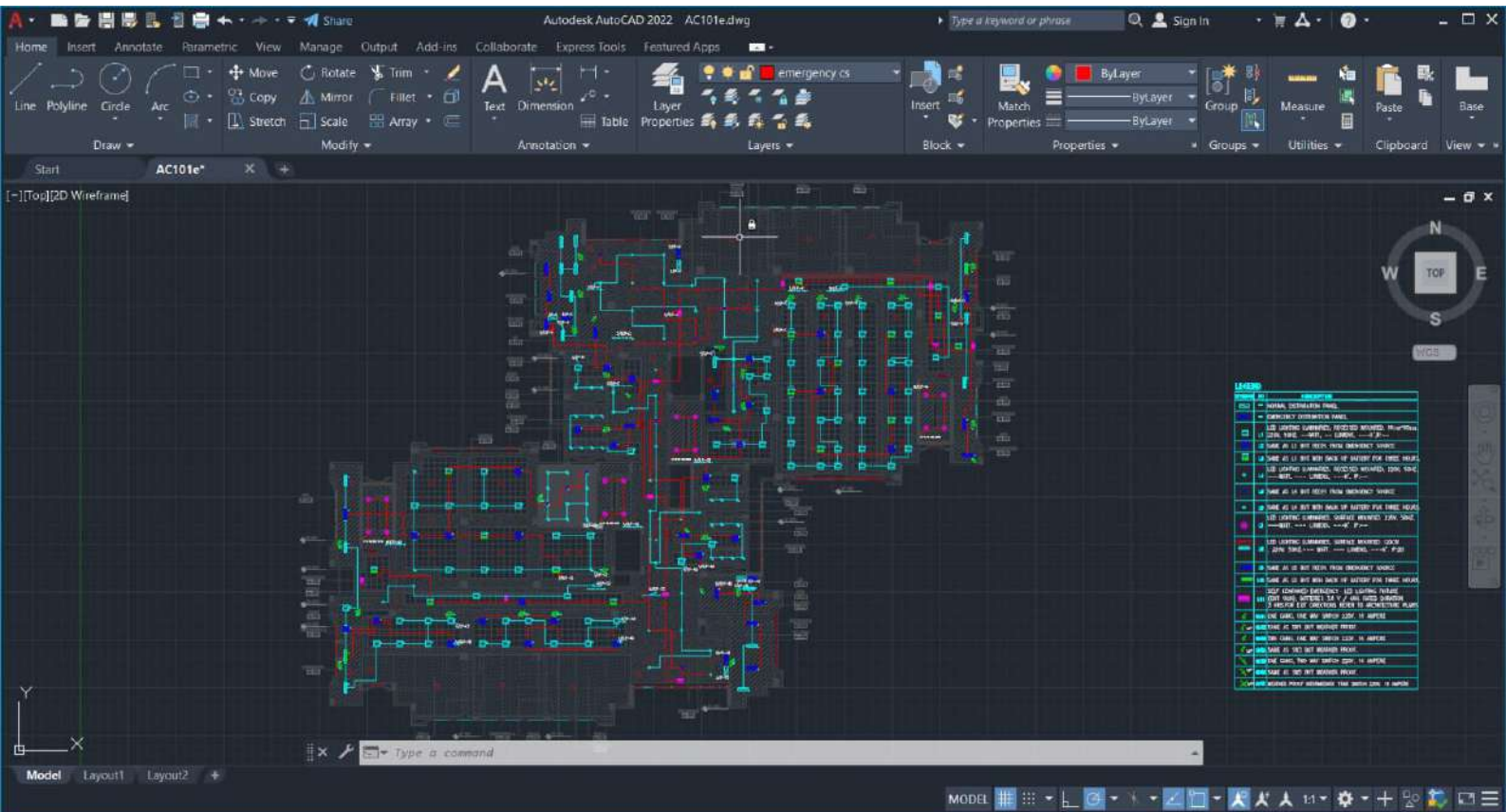
Block Properties Groups Utilities Clipboard View











Branch Panel: LP-B1-G

Location:
 Supply From:
 Mounting: Surface
 Enclosure:

Volts: 400/230
 Phases: 3
 Wires: 4

A.I.C. Rating:
 Mains Type:
 Mains Rating: 50 A
 MCB Rating: 32 A

Notes:

CKT	Circuit Description	Trip	Poles	R	Y	B	R	Y	B	Poles	Trip	Circuit Description	CKT
1	Normal Lighting	20 A	1	101 VA			147 VA			1	20 A	Normal Lighting	2
3	Normal Lighting	20 A	1		36 VA			147 VA		1	20 A	Normal Lighting	4
5	Normal Lighting	20 A	1			126 VA			186 VA	1	20 A	Normal Lighting	6
7	Normal Lighting	20 A	1	189 VA			182 VA			1	20 A	Normal Lighting	8
9	Normal Lighting	20 A	1		189 VA			380 VA		1	20 A	Normal Lighting	10
11	Normal Lighting	20 A	1			257 VA			280 VA	1	20 A	Normal Lighting	12
13	Normal Lighting	20 A	1	250 VA			0 VA			1	20 A	Spare	14
15	Normal Lighting	20 A	1		222 VA			144 VA		1	20 A	Normal Lighting	16
17	Normal Lighting	20 A	1			334 VA			251 VA	1	20 A	Normal Lighting	18
19	Spare	20 A	1	0 VA			0 VA			1	20 A	Spare	20
21	Spare	20 A	1		0 VA			--		1	--	Space	22
23	Normal Lighting	20 A	1			458 VA			--	1	--	Space	24
Total Load:				860 VA		1106 VA		1891 VA					
Total Amps:				4 A		5 A		8 A					

Legend:

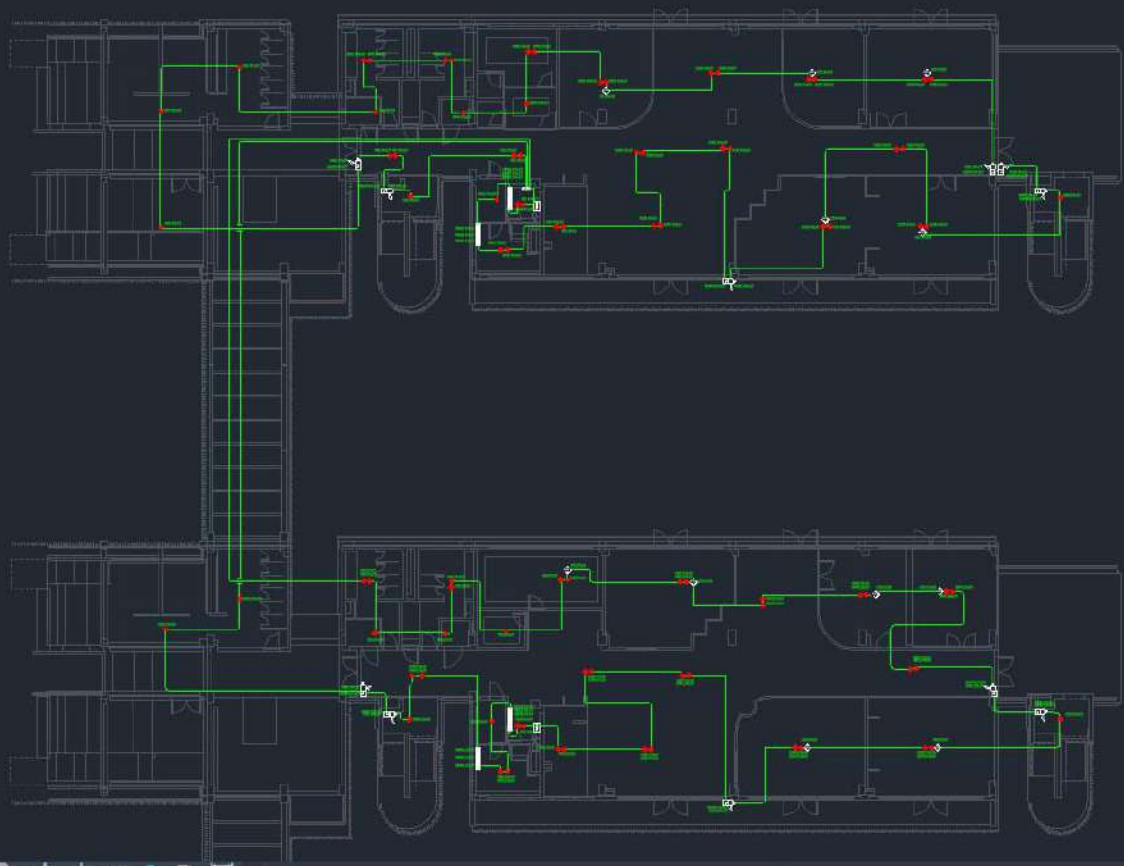
Load Classification	Connected Load	Demand Factor	Estimated Demand	Panel Totals	
EE-LIGHTING	3851 VA	90.00%	3466 VA	Total Conn. Load:	3.85 kVA
				Total Est. Demand:	3.47 kVA
				Total Conn.:	6 A
				Total Est. Demand:	5 A

Notes:

<Electrical Equipment Schedule>

A	B	C	D	E	F	G	H	I
Panel Name	Family and Type	Apparent Load Phase A	Apparent Load Phase	Apparent Load Phase C	Current Phase A	Current Phase B	Current Phase C	Count
ELP-B1-G	Panel Board: ELP-B1-G	494 VA	508 VA	515 VA	2 A	2 A	2 A	1
LP-B1-G	Panel Board: LP-B1-G	860 VA	1106 VA	1891 VA	4 A	5 A	8 A	1
ELP-B2-G	Panel Board: ELP-B2-G	483 VA	479 VA	485 VA	2 A	2 A	2 A	1
LP-B2-G	Panel Board: LP-B2-G	1343 VA	1342 VA	1167 VA	6 A	6 A	5 A	1
PP-B1-G	Panel Board: PP-B1-G	7960 VA	7430 VA	7470 VA	35 A	32 A	33 A	1
EPP-B1-G	Panel Board: EPP-B1-G	4250 VA	4000 VA	3000 VA	19 A	18 A	13 A	1
PP-B2-G	Panel Board: PP-B2-G	6021 VA	6775 VA	6931 VA	26 A	30 A	31 A	1
EPP-B2-G	Panel Board: EPP-B2-G	3000 VA	2750 VA	3824 VA	13 A	12 A	17 A	1
G-Z1	FIRE ALRM CONTROL PANEL : 400x475							1
TC-G2	KT_SCS_Wall_Telecom_Rack: TR							1
TC-G1	KT_SCS_Wall_Telecom_Rack: TR							1
PAR-B1	Public Address Rack: 400x475							1
PAR-B2	Public Address Rack: 400x475							1

FA ground plan floor X



1 : 100

